

DAMPERS

Suitable for close/open bypass exchanger section in connection with crossflow plate heat exchangers.

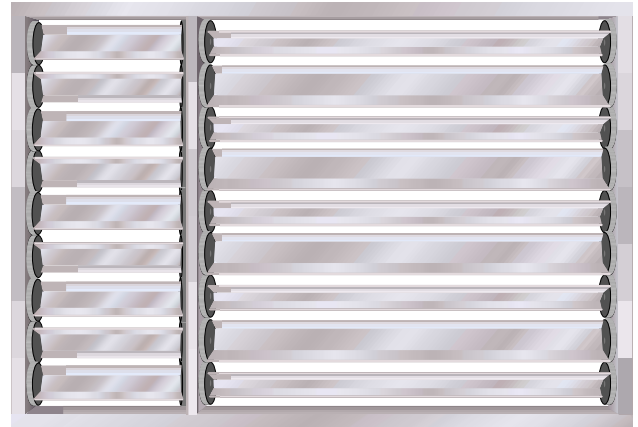
Profiles and damper wings in aluminium and driving wheels in plastic.

The Heatex dampers has visible wheels for better inspection sight and easier cleaning.

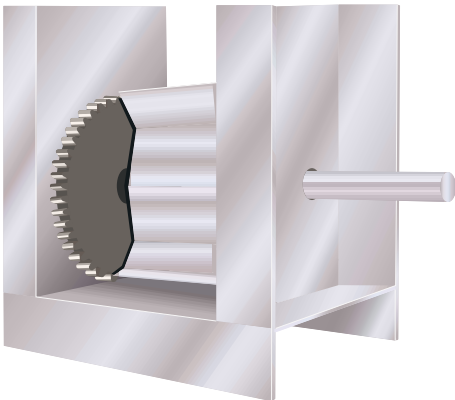
The driving shaft is placed at the end of the wings (damper cross side) according to customer request.

The dampers can upon request be supplied in painted execution. Special only inside-bypass dampers are also available,

Tightness classification 3.

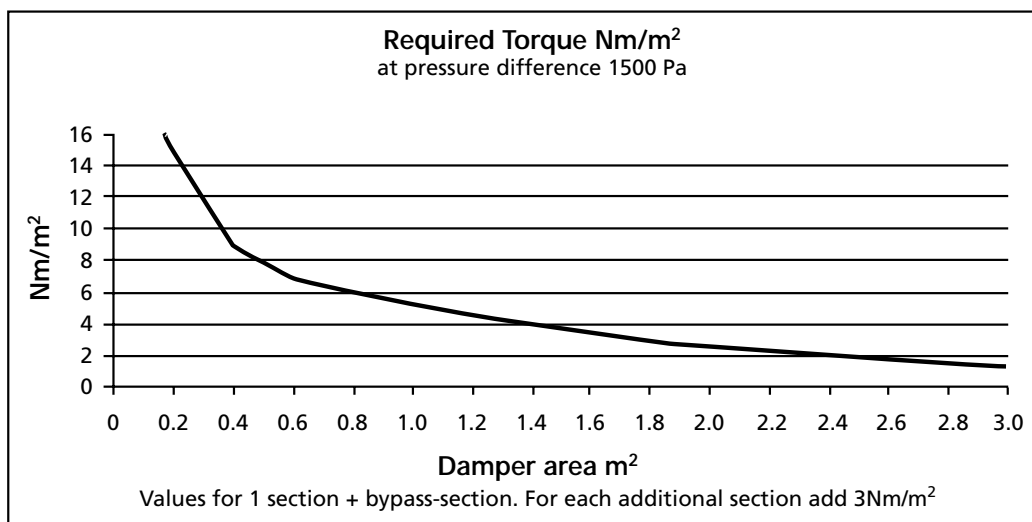


bypass section | exchanger section



DAMPER KEY MEASUREMENTS

Frame height:	120 mm
Wing width/division:	101 mm
Shaft:	Ø 12 mm L = 50 mm
Maximum section width:	1000 mm
Maximum m ² /section:	4 m ²
Maximum sections:	4 sections
(incl. bypass section)	



Owing to continued product development Heatex AB reserves the right to introduce alternations both in design and prices without prior notice.

Heatex AB

Tommarpsvägen 46, SE-231 65 Trelleborg, Sweden
Phone: +46 410 36 35 00, Fax: +46 410 36 35 29
Internet: www.heatex.com