

PRODUCT DATA SHEET

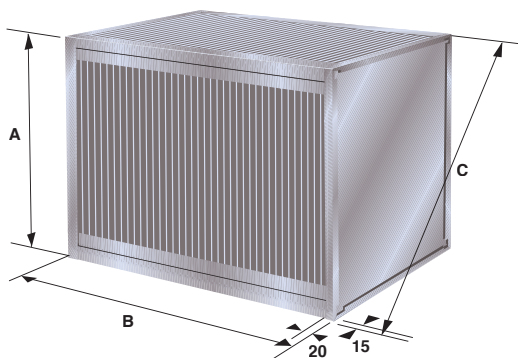
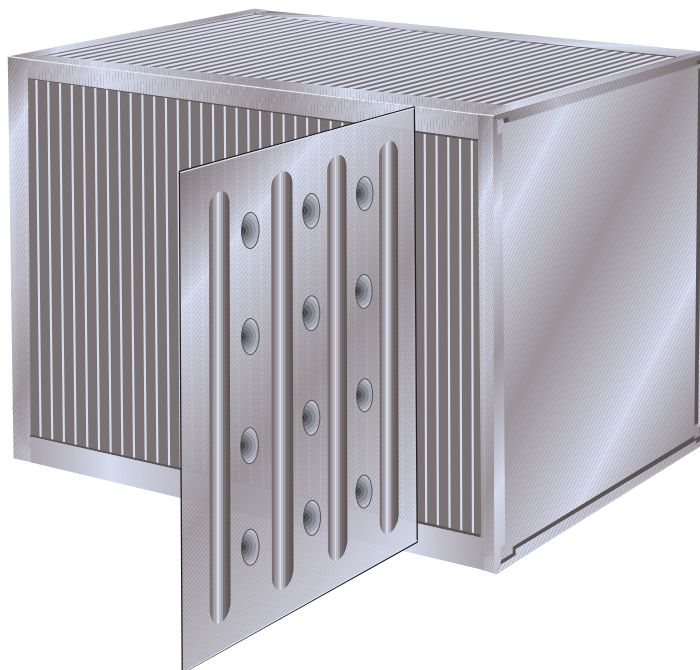
MODEL F (Low pressure drop)

Aluminium and aluminium with epoxy coating.

The Heatex Model F exchanger is manufactured with smooth aluminium plates that are either untreated or epoxy coated. The smooth plates allow even heavy dirt to pass through the channel without getting stuck and fouling or clogging the exchanger which makes it ideal for very polluted environments.

Model F allows a differential pressure up to 800 Pa, whereafter permanent deformation of the plates is possible.

A single pass exchanger can provide an efficiency of 55 – 70%.



MODEL F RANGE

Model	Measure mm				Plate distance nominal (mm)	Frame design
	A	B	C45	C90		
600	600	250-1200	829	849	8.0 / 9.5 / 11.0	1,2,4 E
750	750	300-1200	1041	1061	8.0 / 9.5 / 11.0	1,2,4 E
1000	1000	350-1200	1394	1414	8.0 / 9.5 / 11.0	1,2,4 E
1200	1200	350-1200		1697	8.0 / 9.5 / 11.0	2,4 E
1500	1500	350-1200		2122	8.0 / 9.5 / 11.0	2,4 E
2000	2000	350-1200		2828	8.0 / 9.5 / 11.0	2,4 E
2400	2400	350-1200		3394	8.0 / 9.5 / 11.0	2,4 E

Plate material: Aluminium/Epoxy coated aluminium

Frame material: Corner profiles in aluminium and endplates in aluzinc.

Sealing: Siliconefree (max 90°C, 190°F)
Silicone (max 200°C, 390°F)

FRAME DESIGNS

Heatex F-models are available in various frame designs 2E, 4E, 1E.

See also Heatex Frame Design data sheet.

All frameworks also available painted.

Owing to continued product development Heatex AB reserves the right to introduce alterations both in design and prices without prior notice.

Heatex AB

Tommarpsvägen 46, SE-231 65 Trelleborg, Sweden
Phone: +46 410 71 05 00, Fax: +46 410 71 05 29
Internet: www.heatex.com