

PRODUCT DATA SHEET

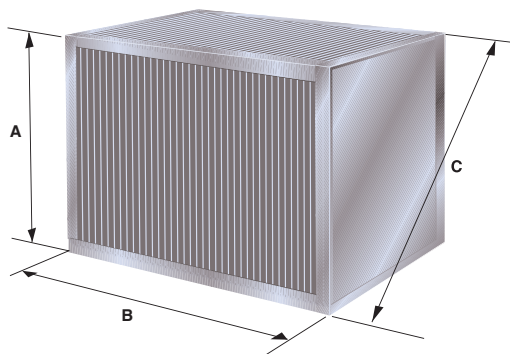
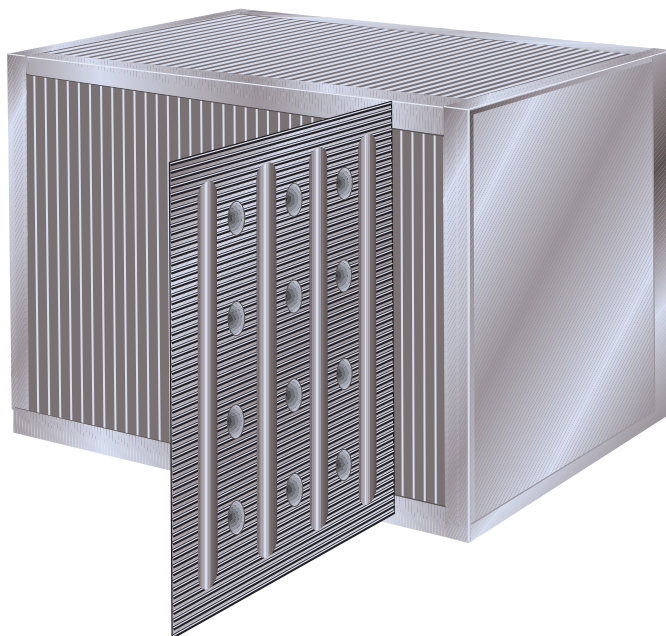
MODEL P (Pressure resistant)

Aluminium and aluminium with epoxy coating.

The Heatex Model P exchanger is designed with the same plate configuration as the success exchanger Heatex Model H, and does allow the same high heat transfer coefficient.

The special characteristics of the Model P is the extra strengthened construction allowing extreme pressure differences up to 3800 Pa.

A single pass exchanger can provide an efficiency of 65 - 70%.



MODEL P RANGE

Model	Measure mm				Plate distance nominal (mm)	Frame design
	A	B	C45	C90		
600	600	250-1200	829	849	2.7 / 3.0 / 4.5 / 6.0 / 7.5 / 9.0 / 10.5 / 12.0	1,2,4 E
750	750	300-1200	1041	1061	3.3 / 4.5 / 6.0 / 7.5 / 9.0 / 10.5 / 12.0	1,2,4 E
1000	1000	350-1200	1394	1414	5.0 / 6.0 / 7.5 / 9.0 / 10.5 / 12.0	1,2,4 E
1200	1200	350-1200	-	1697	4.5 / 6.0 / 7.5 / 9.0 / 10.5 / 12.0	2,4 E
1500	1500	350-1200	-	2122	4.5 / 6.0 / 7.5 / 9.0 / 10.5 / 12.0	2,4 E
2000	2000	350-1200	-	2828	5.0 / 6.0 / 7.5 / 9.0 / 10.5 / 12.0	2,4 E
2250	2250	350-1200	-	3182	4.5 / 6.0 / 7.5 / 9.0 / 10.5 / 12.0	2,4 E
2400	2400	350-1200	-	3394	4.5 / 6.0 / 7.5 / 9.0 / 10.5 / 12.0	2,4 E

Plate material: Aluminium/Epoxy coated aluminium

Frame material: Corner profiles in aluminium and endplates in aluzinc.

Sealing: Siliconefree (max 90°C, 190°F)
Silicone (max 200°C, 390°F)

FRAME DESIGNS

Heatex P-models are available in various frame designs 2E, 4E, 1E. See also Heatex Frame Design data sheet.

All frameworks also available painted.

Owing to continued product development Heatex AB reserves the right to introduce alterations both in design and prices without prior notice.

Heatex AB

Tommarpsvägen 46, SE-231 65 Trelleborg, Sweden
Phone: +46 410 71 05 00, Fax: +46 410 71 05 29
Internet: www.heatex.com