

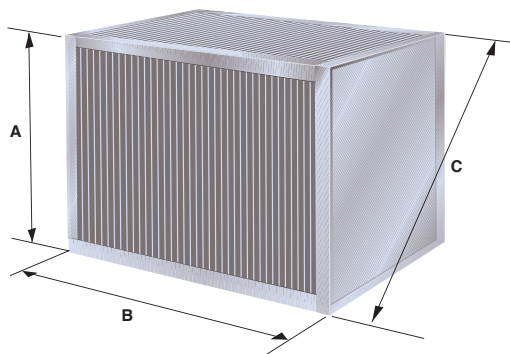
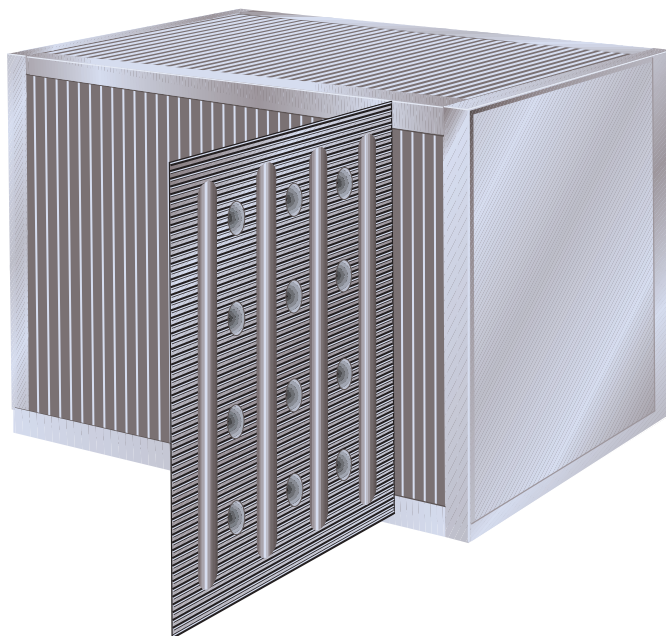
MODEL Z (Corrosive environments)

Acid resistant stainless steel 1.4404 (ASTM 316).

The Heatex Model Z exchanger is designed with the same plate configuration as the success exchanger Heatex Model H, and does allow the same high heat transfer coefficient.

Model Z is designed for corrosive environments and can therefore be used in industrial applications. Pressure differences up to 4000 Pa can be handled by Model Z.

A single pass exchanger can provide an efficiency of 65 - 70%.



MODEL Z RANGE

Model	Measure mm				Plate distance nominal (mm)
	A	B	C45	C90	
600	600	250-1200	-	849	6.0 / 7.5 / 9.0
1200	1200	350-1200	-	1697	6.0 / 7.5 / 9.0

Plate material: Acid resistant stainless steel 1.4404 (ASTM 316)

Frame material: Corner profiles and endplates in Acid resistant stainless steel 1.4404 (ASTM 316).

Sealing: Siliconefree (max 90°C, 190°F)
Silicone w. acetum (max 200°C, 390°F)
High temperature Silicone (max 230°C, 440°F)

FRAME DESIGNS

Heatex Z-models are available in one standard frame design 2 E. See also Heatex Frame Design data sheet.

Owing to continued product development Heatex AB reserves the right to introduce alterations both in design and prices without prior notice.